

FACT SHEET

UIS ELEPHANT GUESTHOUSE



A LEGENDARY JOURNEY TO THE BRANDBERG



Uis Elephant Guesthouse

Our guesthouse offers 4 standard and 5 luxury rooms, as well as 3 double-story suites for guests wanting to indulge in a comfortable stay-over close to the Brandberg. All of our rooms are en-suite and equipped with twin beds, a dressing table, air conditioning, and mosquito nets. Their interior design boasts of a rustic farmer's flair with a modern and clean touch. Combining stylish luxury and elegant cuisine.

We are a bed & breakfast, providing guests with a delicious breakfast buffet, dinner, and lunch (on request). We serve homemade cuisine.

We also offer a free airstrip shuttle service.

Uis Elephant Guesthouse and its surroundings invite you to explore beautiful nature. We offer full-day Brandberg excursions (incl. picnic lunch, water, and soft drinks), and sundowner drives (incl. sundowner drinks and snacks).

AMENITIES



WiFi

WiFi is provided throughout the property



SWIMMING POOL

our swimming pool is accessible all year round



ACTIVITIES

our activities include game drives as well as a sleep-out option



WHEELCHAIR ACCESSIBLE

1 of our standard rooms is wheelchair-friendly



FAMILY FRIENDLY

we welcome kids of any age and are very open to making necessary sleeping arrangements for families

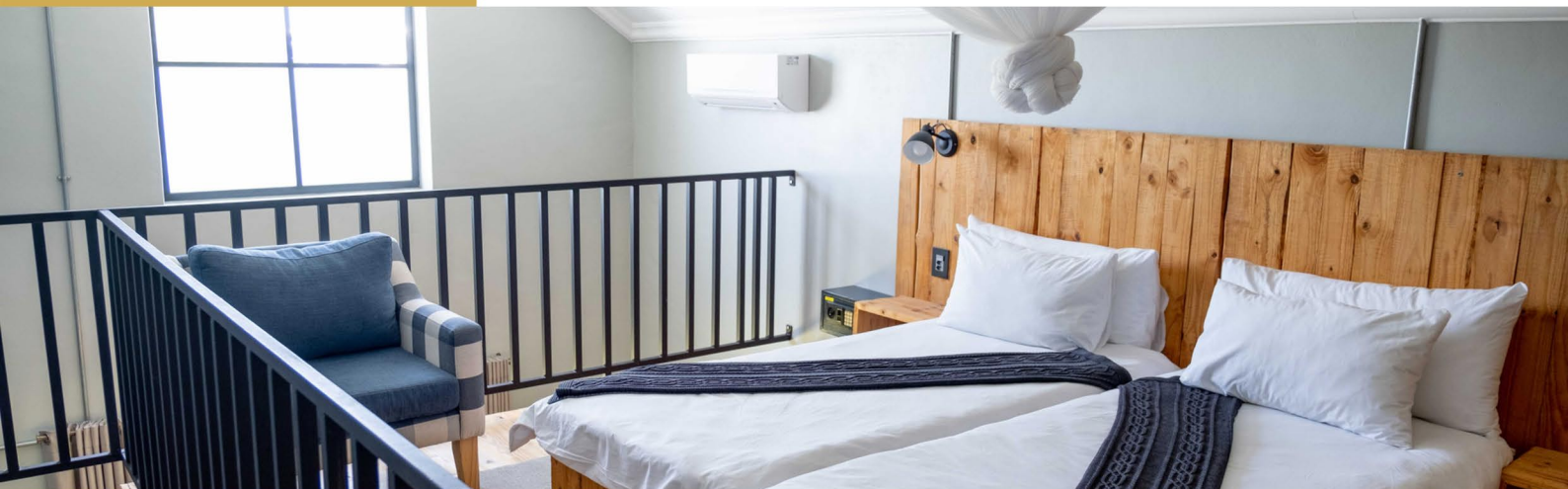


AIRPORT SHUTTLE

we offer a complimentary airport shuttle from and to the guesthouse

STANDARD ROOMS

Our 4 standard rooms are situated around the main house. They are all en-suite (shower, washbasin, toilet). All rooms are equipped with twin beds, a dressing table, air conditioning, and mosquito nets.



LUXURY ROOMS

Our 5 luxury rooms are more spacious than the standard rooms with the option of putting in an extra bed for a child under the age of 12 years old. They are all en-suite (shower, washbasin, toilet). All rooms are equipped with twin beds, a dressing table, lounge chair, air conditioning, and mosquito nets.



SUITES

Our 3 suites are double-story with a built-in wooden deck as for a bedroom and a lounge area and bathroom at the ground level. They are all en-suite and equipped with twin beds, a dressing table, air conditioning, and mosquito nets. The lounge area consists of a small kitchenette, a sleeper couch, and some more lounge furniture.



uis elephant
guesthouse



uis elephant
guesthouse



DINING

We serve breakfast, lunch, and dinner.

For any travellers not staying at the guesthouse, lunch has to be pre-booked and a set menu will be served.

We serve elegant cuisine our kitchen chefs work around the clock to provide you with delicious homemade cuisine.



uis elephant
guesthouse

Sleep out

1 NIGHT CAMPING UNDER THE STARS 1 NIGHT GUESTHOUSE

Accommodation for our guests is provided in modern dome-style tents.

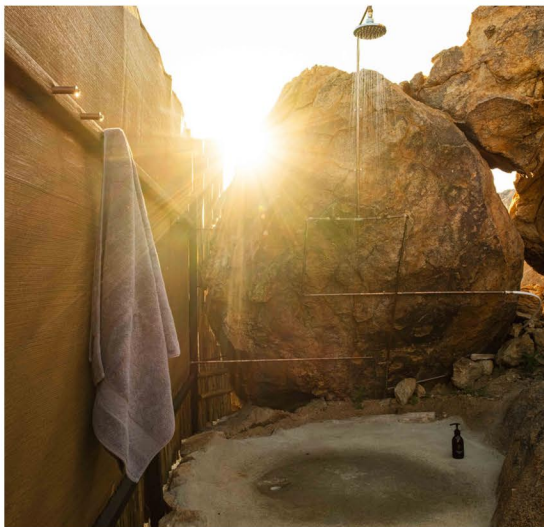
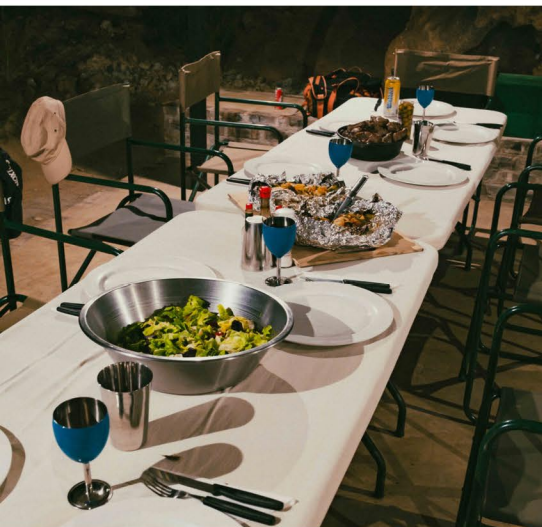
The tents provide comfortable beds consisting of a stretcher, a fully made-up bedroll, and a pillow. We provide ablutions and ensure privacy as well as comfort in the wildest of locations.

The adventure starts as a sundowner drive in the late afternoon. After the sundowner, the clients will be taken to the camp which has been set up prior to their arrival. The guests can enjoy a refreshing drink while sitting around the fireplace. Later in the evening, a warm supper will be prepared on the fire. After dinner, the guests can enjoy sitting around the fire, listening to the sounds of the wild, and gazing at the stars above. As dawn breaks, our day begins with hot filter coffee/tea and rusks around the fire. The guests will then be transferred back to the guesthouse in time for a scrumptious breakfast. The rest of the day is at leisure. Enjoy a splash into the pool in the lush garden or take a drive out to visit the famous "White Lady" rock engravings. Alternatively book an Elephant Drive with the guesthouse (at own account).

Package includes Dinner, Bed & Breakfast (drinks are at own account).

Descriptions are only guidelines. Actual logistics at discretion of the guide.

Subject to weather conditions and animal movements.



uis elephant
guesthouse



Brandberg Hiking

3 NIGHTS BRANDBERG HIKING EXPERIENCE

Our Brandberg hiking experiences are strictly subject to availability and need to be booked prior to arrival (at least 4 weeks in advance).

Not recommendable from November to March due to heat.

The package is only available to a group of min. 4 pax and includes the following:

- 2 nights Uis Elephant Guesthouse (DBB)
- 1 night Brandberg hiking and overnight on the Brandberg mountain (DBB + lunchpacks)

For the hike:

- 1 guide
- all necessary permits
- backpack and sleeping equipment
- food and water

Required Fitness Level

The terrain requires proper footwear, some balance, and hard work.

The Brandberg is no easy climb and is taxing on legs and body.

BRANDBERG HIKING

FULL ITINERARY

Day 01 - Arrive at Uis Elephant Guesthouse. In the evening, we will have a briefing in preparation for the big hike the next day. After the introduction, we pack our bags and allocate food and equipment.

Day 02 - After an early breakfast, we drive about 1 hour to the foot of the Brandberg on the western side. After a short briefing, we are off by 09h00 and enjoy a gentle introduction with ever-increasing slopes. Every half an hour or so we stop for a short breather. Depending on our group's fitness level we should reach our lunch spot by 13h00. Here we rest somewhat longer in the shade before we tackle the last 2 hours to camp. We should be at our overnight spot by about 16h00. We rest and explore the area. Dinner is prepared rather early, and we go to sleep as soon as it gets dark.

Day 03 - We wake up before sunrise to have some coffee and breakfast. As soon as it is light enough to walk, we depart. We should be on the edge of the mountain shortly before we start the actual descend, just as the first light touches the horizon. We spend some time enjoying this majestic spectacle. From here we continue downwards with regular stops. The entire journey today is about 4 hours. Once we are back at our vehicle the first drinks taste exceptionally good. We transfer back to Uis Elephant Guesthouse in time for lunch. The afternoon is at leisure. Overnight at Uis Elephant Guesthouse.



uis elephant
guesthouse





Activities

FULL DAY BRANDBERG EXCURSION

After an early breakfast, we set out cross-country through dry riverbeds due west towards the Brandberg mountain. We explore parts of the Ugab River in search of the desert- adapted elephants and go for a quick swim in one of the permanent pools on the foot of the mountain

includes picnic lunch, water, and soft drinks

SUNDOWNER DRIVE

We depart on a scenic nature drive in a 4x4 safari vehicle to a beautiful sunset spot. Here we relax and enjoy the breath-taking views, some drinks, and snacks for sunset

includes sundowner drinks and snacks

ELEPHANT DRIVE

AM/PM 3-4 hours game drive departing from the guesthouse towards the Brandberg mountain. We explore the sandy riverbed in search of the elusive desert-adapted elephants

incl. drinking water



uis elephant
guesthouse

HOW TO FIND US



RESERVATIONS

EMAIL

reservations@uisguesthouse.com

TEL

+264 64 50 4396

WEBSITE

www.uisguesthouse.com



uis elephant
guesthouse

ADMINISTRATOR: CONTACT PERSON

CONTACT

Elizabeth

EMAIL

elizabeth@nfs.travel

TEL

+264 61 23 4793

TERMS & CONDITIONS

RESERVATIONS & CANCELLATIONS

All reservations must be confirmed in writing, and by provision of a final rooming list, not less than 60 days prior to arrival

Any rooms cancelled within 60 days of arrival will be subject to the following cancellation penalties:

10% within 8 weeks of arrival
25% within 4 weeks of arrival
50% within 3 weeks of arrival
75% within 2 weeks of arrival
90% within 1 weeks of arrival

PAYMENTS

Full payment must be made within 30 days of date of arrival, unless otherwise specifically agreed by Uis Elephant Guesthouse.

Payment is to be made into the following bank account and copy of the deposit slip is to be emailed to the reservations office as confirmation of payment.

Account Name: Uis Elephant Guesthouse cc

Bank: NEDBANK Windhoek

Account no: 11990080862

Branch: Main Branch

Branch code: 461617

CHECKIN / OUTTIMES

Check-in at 14h00 and check-out at 10h00

These times can be flexible with prior arrangement

RESERVATIONS

EMAIL

reservations@uisguesthouse.com

TEL

+264 64 50 4396

WEBSITE

www.uisguesthouse.com



ADMINISTRATOR: CONTACT PERSON

CONTACT

Elizabeth

EMAIL

elizabeth@nfs.travel

TEL

+264 61 23 4793